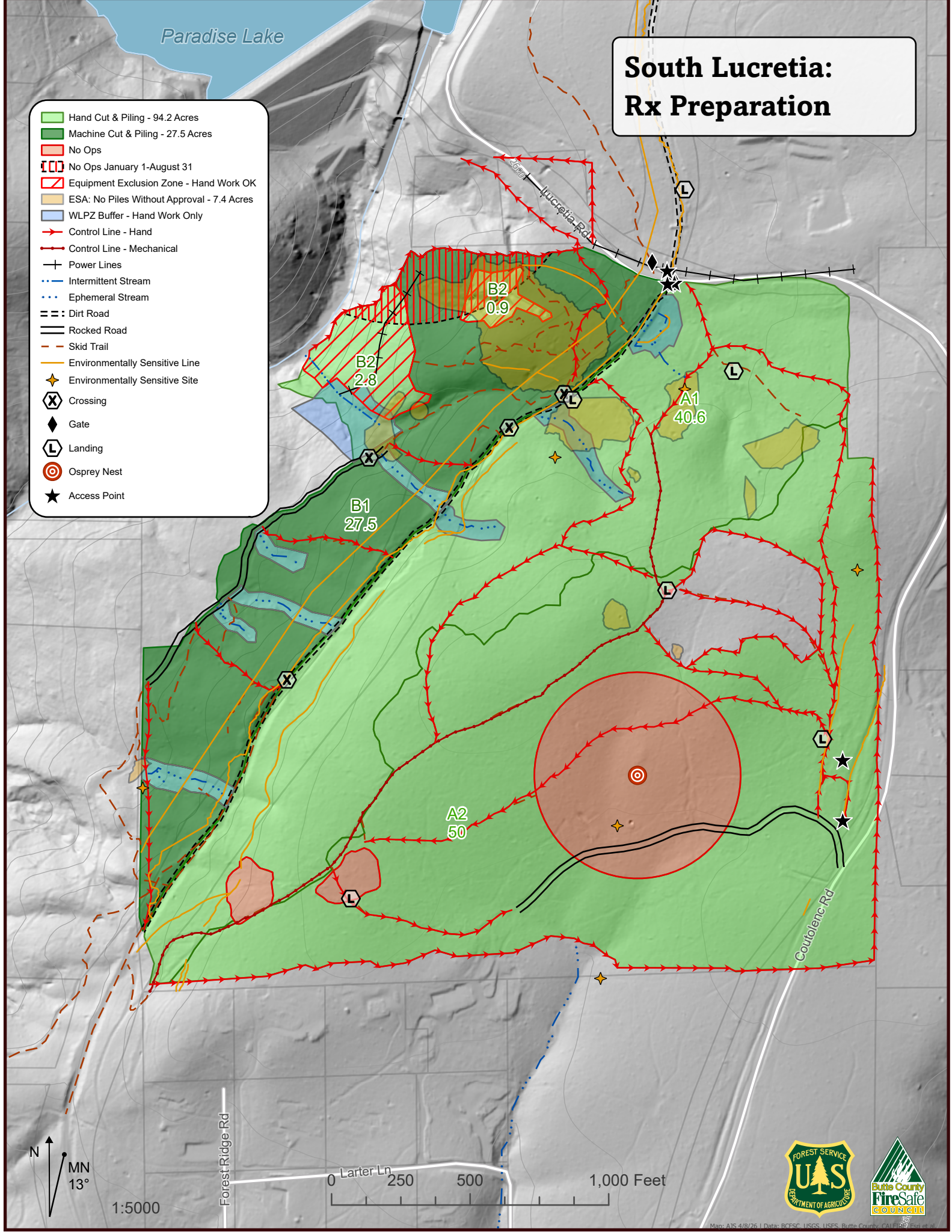


Paradise Lake

# South Lucretia: Rx Preparation

- Hand Cut & Piling - 94.2 Acres
- Machine Cut & Piling - 27.5 Acres
- No Ops
- No Ops January 1-August 31
- Equipment Exclusion Zone - Hand Work OK
- ESA: No Piles Without Approval - 7.4 Acres
- WLPZ Buffer - Hand Work Only
- Control Line - Hand
- Control Line - Mechanical
- Power Lines
- Intermittent Stream
- Ephemeral Stream
- Dirt Road
- Rocked Road
- Skid Trail
- Environmentally Sensitive Line
- Environmentally Sensitive Site
- Crossing
- Gate
- Landing
- Osprey Nest
- Access Point



1:5000

Forest Ridge Rd

